



ELOVL3 Polyclonal Antibody

| | |
|---------------------------|--|
| Catalog No | YP-Ab-02628 |
| Isotype | IgG |
| Reactivity | Human;Rat;Mouse; |
| Applications | IHC;IF;ELISA |
| Gene Name | ELOVL3 |
| Protein Name | Elongation of very long chain fatty acids protein 3 |
| Immunogen | The antiserum was produced against synthesized peptide derived from human ELOVL3. AA range:31-80 |
| Specificity | ELOVL3 Polyclonal Antibody detects endogenous levels of ELOVL3 protein. |
| Formulation | Liquid in PBS containing 50% glycerol, 0.5% BSA and 0.02% sodium azide. |
| Source | Polyclonal, Rabbit,IgG |
| Purification | The antibody was affinity-purified from rabbit antiserum by affinity-chromatography using epitope-specific immunogen. |
| Dilution | IHC: 1/100 - 1/300. ELISA: 1/20000.. IF 1:50-200 |
| Concentration | 1 mg/ml |
| Purity | ≥90% |
| Storage Stability | -20°C/1 year |
| Synonyms | ELOVL3; CIG30; Elongation of very long chain fatty acids protein 3; 3-keto acyl-CoA synthase ELOVL3; Cold-inducible glycoprotein of 30 kDa; ELOVL fatty acid elongase 3; ELOVL FA elongase 3 |
| Observed Band | |
| Cell Pathway | Endoplasmic reticulum membrane ; Multi-pass membrane protein . |
| Tissue Specificity | Testis. |
| Function | domain:The di-lysine motif confers endoplasmic reticulum localization for type I membrane proteins.,function:May be involved in a membrane event related to cellular proliferation in brown adipose tissue. Could be implicated in synthesis of very long chain fatty acids and sphingolipids. May catalyze one or both of the reduction reaction in fatty acid elongation, i.e., conversion of beta-ketoacyl CoA to beta-hydroxyacyl CoA or reduction of trans-2-enoyl CoA to the saturated acyl CoA derivative.,similarity:Belongs to the ELO family., |
| Background | This gene encodes a protein that belongs to the GNS1/SUR4 family. Members of this family play a role in elongation of long chain fatty acids to provide precursors for synthesis of sphingolipids and ceramides. [provided by RefSeq, Jul 2013], |

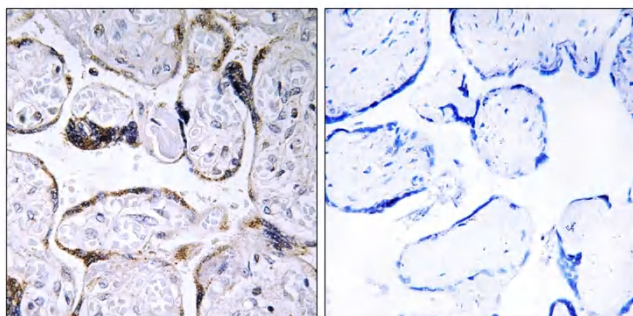
**matters needing attention**

Avoid repeated freezing and thawing!

Usage suggestions

This product can be used in immunological reaction related experiments. For more information, please consult technical personnel.

Products Images



Immunohistochemistry analysis of paraffin-embedded human placenta, using ELOVL3 Antibody. The picture on the right is blocked with the synthesized peptide.